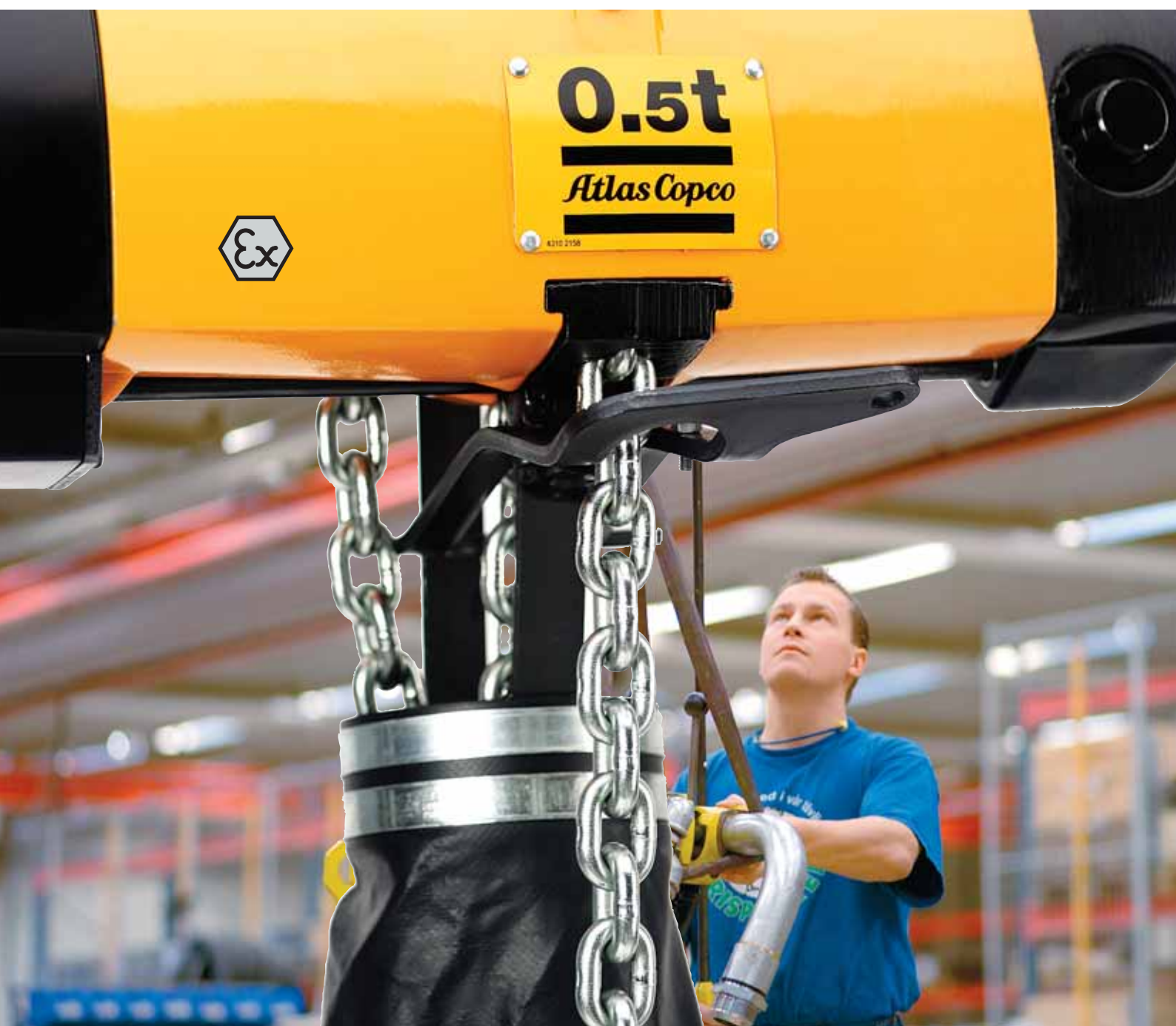


Atlas Copco air hoists and trolleys

Safety gets a big lift



Atlas Copco



Explosion-proof operation and stepless control for a smoother safer lift

Atlas Copco air hoists and trolleys are the industry benchmark for fast, precise and reliable lifting of heavy loads – even in cramped and sometimes hostile industrial environments. Compact and lightweight, they are easy to control, survive rough handling and provide heavyweight performance.



Designed for survival

Powered by air, Atlas Copco's hoists stay cool in the toughest situations. They can be operated continuously at maximum load, with frequent starts and stops, without damage or overheating. They ignore heat, dust and moisture and are highly corrosion resistant. This ensures long life, exceptional reliability and enhanced safety.

Small is beautiful

Extremely compact and light compared to conventional electrically-powered units, our air hoists are easily installed almost anywhere, even with cramped working conditions and/or low ceilings. Low weight also simplifies removal for maintenance or relocation.

EXPLOSION PROOF FOR SAFE OPERATION

Our air hoists and trolleys are ideal for lift applications in hazardous environments, where sparks or high outer temperatures could ignite explosive gases, vapour or dust.

All are certified Explosion-proof, to stringent European standards, in compliance with the EU ATEX Directive. Available in six sizes, they offer lift capacities from 200 kg to 5000 kg. All hoists types are certified to level Ex II 2G T5 II B D100°C.

The SR types are even certified to Ex II 2G T5 IIC D100°C.



SMOOTH CONTROL AND PRECISE POSITIONING

Stepless speed control and excellent inching characteristics guarantee a smooth start, while Atlas Copco's patented disc brake mechanism eliminates load sink and ensures smooth take-up.

"REMOTE" OPERATION

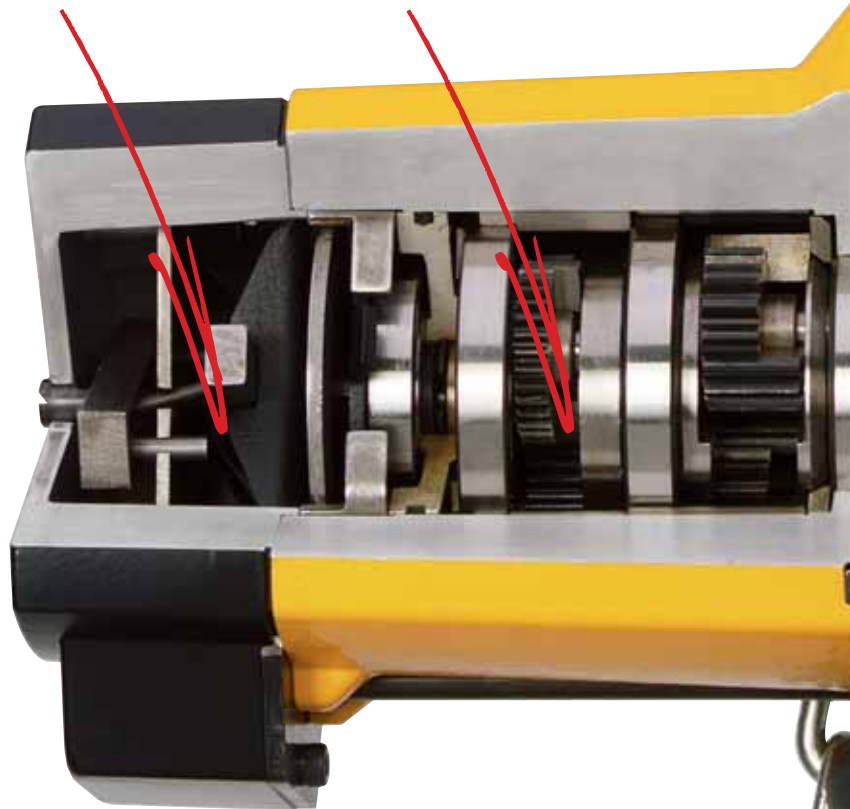
Choose a chain, pendant or high-precision twist-rod control for operation at a comfortable distance from the suspended load. Pendant controls are available with two-button (hoist or trolley) or four-button (hoist and trolley) handles.

Brake

The enclosed disc brake eliminates load sink and ensures smooth take-up.

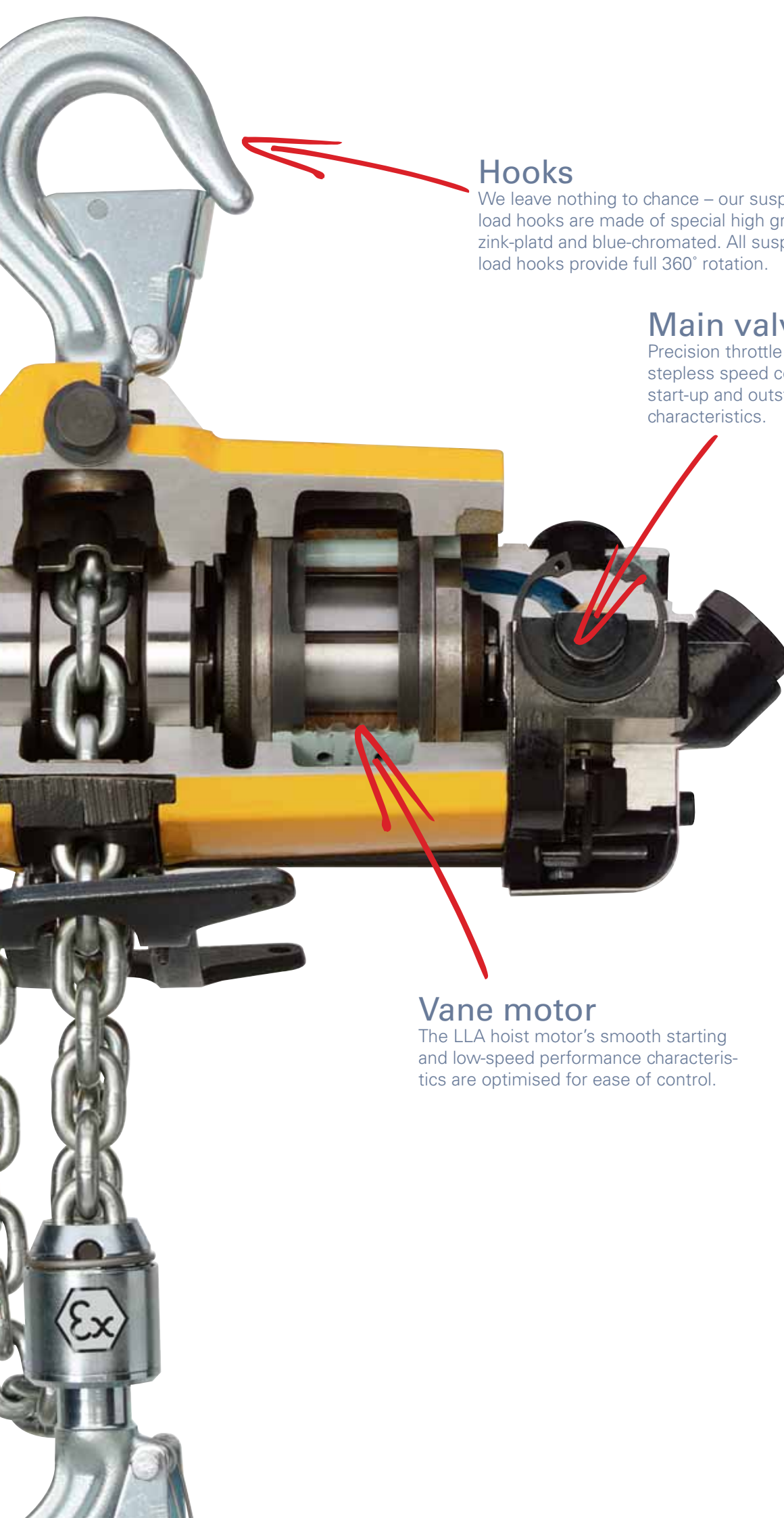
Gears

Planetary gear system dimensioned for continuous operation at full load. All meshing components are hardened, all rotating components supported by ball or needle bearings.



Load chain

The load chain is made of surface hardened, high-grade special steel. Zinc-plated and blue-chromated, this load chain is designed for long service life and optimal safety.



Hooks

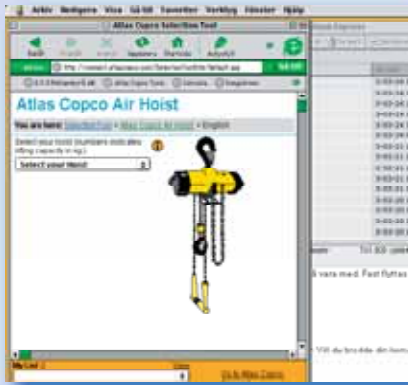
We leave nothing to chance – our suspension and load hooks are made of special high grades steel, zink-plated and blue-chromated. All suspension and load hooks provide full 360° rotation.

Main valve

Precision throttle valve for stepless speed control, smooth start-up and outstanding inching characteristics.

Vane motor

The LLA hoist motor's smooth starting and low-speed performance characteristics are optimised for ease of control.



Select your hoist on the web

Choose the right hoist on the Web at www.atlascopco.com/selectiontool or send for our interactive CD (Air Hoist Selection Program).

ORDERING YOUR HOIST OR TROLLEY WITH FACTORY – FITTED ACCESSORIES

To order your hoist or trolley with accessories factory-fitted, just list the required items and add the order code, 8990 0001 00. Note that air line accessories cannot be ordered assembled to the hoist.

Example: To order a 500 kg hoist with motor driven trolley, four-button five-metre long pendant control and a load chain for a ten-metre lift, send the following:

Order to be sent	Comments
1 x 8451 1540 28	LLA 500 EX Hoist block
11 x 4310 2293 00	Load chain for hoist = Required height of lift + 0.5 m (see Technical data for LLA Hoist).
1 x 8451 1520 14	TLT 1000M Motor driven trolley
1 x 4310 2263 90	4 button handle + hoist actuator
5 x 4380 0576 94	Hose set for 4 button pendant control
1 x 8990 0001 00	Instruction to assemble above items

Explosion-proof trolleys for risk-free mobility

Available in manual or motorised versions, Atlas Copco hoist trolleys provide the obvious solution to horizontal mobility.

Explosion-proofed, flexible and simple to install, they are equally suitable for parallel or tapered I-beams, and easily adjusted to different widths.



“Precision” twist-rod control

Twist-rod control offers the highest level of precision. Adjustable length (one to two metres). Special extension rod (up to five metres) also available.



Chain collectors

Chain collectors in reinforced PVC cloth or sheet steel can be ordered for a range of chain lengths.



Standard chain control

Standard versions of LLA hoists include a chain control handle.

Overload protection device

Can be fitted to avoid unintentional hoist overload. When overloaded, the device automatically reduces motor output. Supplied as standard (except for LLA 1000 U) for lifting capacities of 1000 kg, 2500 kg and 5000 kg. Optional accessory for loads up to 1000 kg.



“Remote” pendant control

Pendant controls are used to extend the operating area up to ten metres from the hoist. A two-button unit for hoist or trolley control, or four-button unit for hoist and trolley control. Both are equipped with a safety-stop button.



Safety hook

A safety hook (cannot be opened under load) can be fitted for additional lifting safety.



Chain stop

A chain stop can be fitted to stop the hoist at a pre-determined position.



TECHNICAL DATA, HOISTS

Model	Max lifting capacity		Lifting speed at full load		Chain drops qty	Weight excl chain		Chain weight		Required chain-length metre	Sound level dB(A)	Air consumption l/s	Hose consumption dia. mm	Hose fitting thread		Ordering No.	
	kg	ton	m/min	ft/min		kg	lb	kg/mlb/ft	BSP					in			
LLA 200 EX	200	0.2	20.2	66.3	1	12.7	28.0	0.9	0.6	Lifting height + 0.5	84	38	81	12.5	1/2	1/2	8451 1540 02
LLA 250 EX	1.0	1	12.7	28.0				0.9	0.6	Lifting height + 0.5	84	37	78	12.5	1/2	1/2	8451 1540 10
LLA 500 EX	500	0.5	12.6	41.3	1	12.7	28.0	0.9	0.6	Lifting height + 0.5	83	38	81	12.5	1/2	1/2	8451 1540 28
LLA 1000 U EX ^a	1000	1.0	6.3	20.7	2	14.5	32.0	0.9	0.6	2 x Lifting height + 0.5	83	38	81	12.5	1/2	1/2	8451 1540 69
LLA 1000 EX	1000	1.0	6.3	20.7	2	15.0	32.0	0.9	0.6	2 x Lifting height + 0.5	83	38	81	12.5	1/2	1/2	8451 1540 36
LLA 2500 EX	2500	2.5	3.2	10.5	1	42.5	93.7	2.9	1.9	Lifting height + 0.6	79	40	85	20.0	3/4	1/2	8451 1540 44
LLA 5000 EX	5000	5.0	1.6	5.2	2	65.5	144.4	2.9	1.9	2 x Lifting height + 0.9	79	40	85	40.0	3/4	1/2	8451 1540 51
SR Model																	
LLA 250-SR	250	0.25	17.0	55.8	1	12.7	28.0	0.9	0.6	Lifting height + 0.5	83	45	95	12.5	1/2	1/2	8451 1510 08
LLA 500-SR	500	0.5	8.5	27.9	2	14.5	32.0	0.9	0.6	2 x Lifting height + 0.5	83	45	95	12.5	1/2	1/2	8451 1510 16
LLA 1250-SR	1250	1.25	5.0	16.4	1	42.5	93.7	2.9	1.9	Lifting height + 0.6	79	50	106	20.0	1/2	1/2	8451 1510 24

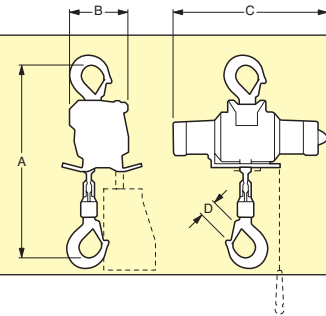
Performance figures are at 6 bar working pressure

NOTE: Load chain and control chain must be ordered separately.

^a Without overload protection device, not to be used within the European community.

DIMENSIONS

TYPE	A		B		C		D	
	mm	in	mm	in	mm	in	mm	in
	LLA 200 / 250 EX	377	14.8	122	4.8	390	15.4	29
LLA 500 EX / 250 SR	377	14.8	122	4.8	390	15.4	29	1.1
LLA 1000 U EX / 500 SR	445	17.5	122	4.8	390	15.4	29	1.1
LLA 1000 EX	495	19.4	122	4.8	390	15.4	29	1.1
LLA 2500 EX / 1250 SR	575	22.6	212	8.3	546	21.5	50	2.0
LLA 5000 EX	785	30.9	249	9.8	546	21.5	60	2.4



TECHNICAL DATA, TROLLEYS

Model	Max capacity		Max. speed with full load		Air consumption		Beam width standard		Beam width optional		Curve radius min		Weight		Sound level dB(A)	Ordering No.
	kg	ton	m/min	ft/min	l/s	cfm	mm	in	mm	in	mm	in	kg	lb		
Manual																
TLT 1000	1000	1	-	-	-	-	50-165	2-6.5	134-265	5.3-10.4	1250	50	9.4	21	-	8451 1520 06
TLT 2500	2500	2.5	-	-	-	-	136-334	5.2-13.1	60-172	2.3-6.7	2200	88	32	70	-	8451 1520 55
LLT 1000 SR	1000	1	-	-	-	-	54-173	2.1-6.8	140-273	5.5-10.7	1200	47	9.5	21	-	8451 1500 00
LLT 2500 SR	2500	2.5	-	-	-	-	133-332	5.2-13.1	58-170	2.3-6.7	1400	55	24.5	54	-	8451 1500 26
Motor driven																
TLT 1000 M ^a	1000	1	14.0	45.9	4.0	8.5	50-155	2-6.1	134-255	5.3-10.0	1250	50	11.0	24	85	8451 1520 14
LLT 2500 M ^b	2500	2.5	17.8	58.4	42.0	89.0	133-306	5.2-12.0	58-144	2.3-5.7	1400	55	41.0	90	81	8451 1491 19
LLT 5000 M ^b	5000	5	16.2	53.1	42.0	89.0	145-300	5.7-11.8	70-148	2.8-5.8	1800	71	91.0	200	81	8451 1491 27
LLT 1000 (M) SR ^{a,c}	1000	1	14.0	45.9	4.5	9.5	54-153	2.1-6.0	140-253	5.5-10.0	1200	47	11.0	24	85	8451 1500 42
LLT 2500 M SR ^{b,c}	2500	2.5	17.8	58.4	42.0	89.0	133-306	5.2-12.0	58-144	2.3-5.7	1400	55	41.0	90	81	8451 1500 34

Performance figures are at 6 bar working pressure.

^a Pendant control must be ordered separately.

Note: Suspension Yoke for optional beam width must be ordered separately.

^b Includes handle for control chain. Control chain must be ordered separately.

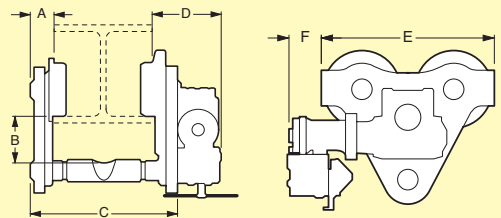
Motor-driven trolleys have 1/2" BSP connection.

^c The pendant controls are not spark resistant.

12.5 mm 1/2" hose size is recommended for 1000M, 20 mm for 2500 and 5000.

DIMENSIONS

Model	A		B		C standard		C optional		D		E		F	
	mm	in	mm	in	mm	in	mm	in	mm	in	mm	in	mm	in
Manual														
TLT 1000	22.0	0.9	52	2.0	212	8.3	312	12.2	-	-	264	10.4	-	-
LLT 1000 SR	23.5	0.9	55	2.2	212	8.3	312	12.3	-	-	250	9.8	-	-
TLT 2500 SR	37.0	1.5	57	3.2	400	15.7	238	9.4	-	-	370	12.8	-	-
Motor driven														
TLT 1000 M	22.0	0.9	52	2.0	212	8.3	312	12.2	224	8.8	264	10.4	-	-
LLT 1000 (M) SR	23.5	0.9	55	2.2	212	8.3	312	12.3	225	8.9	250	9.8	-	-
LLT 2500 M/SR	39.0	1.5	82	3.2	400	15.7	238	9.4	161	6.3	325	12.8	126	5.0
LLT 5000 M	61.0	2.4	118	4.6	424	16.7	282	11.1	181	7.1	422	16.6	79	3.1



OPTIONAL ACCESSORIES, TROLLEYS

Designation	Ordering No. TLT 1000/LLT 1000-SR	Ordering No. TLT 2500/-SR	Ordering No. TLT 1000M/LLT 1000(M)-SR	Ordering No. LLT 2500M/M-SR	Ordering No. LLT 5000M
Suspension Yoke	4380 0640 02	4380 0608 00	4380 0640 02	4380 0608 00	4380 0628 00
Zinc plated control chain per m				4310 0748 00	4310 0748 00
Stainless steel control chain per m				4310 2221 00	
2-Button Pendant Control					
Handle and actuator only			4310 0835 91	4310 2262 90	4380 2262 90
Hose kit per m			4380 0576 92	4380 0576 91	4380 0576 91

OPTIONAL ACCESSORIES, HOISTS

Hoist accessories Description	Ordering No. LLA 200/250/500/1000 EX	Ordering No. LLA 2500/5000 EX	Ordering No. LLA 250/500 SR	Ordering No. LLA 1250 SR
Load chain, zinc plated, per m	4310 2293 00	4310 2296 00		4310 2219 00
Load chain, stainless steel, per m			4310 2211 00	
Control chain, zinc plated, per m	4310 0748 00	4310 0748 00		4310 2221 00
Control chain, stainless steel, per m			4310 2221 00	4310 2221 00
2 Button pendant control				
Handle and actuators	4310 2261 90	4310 2262 90	4310 2261 90	4310 2262 90
Hose set per m	4380 0576 91	4380 0576 91	4380 0576 91	4380 0576 91
4 Button pendant control				
Handle and actuators	4310 2263 90	4310 2264 90	4310 2263 90	4310 2264 90
Hose set per m	4380 0576 94	4380 0576 93	4380 0576 94	4380 0576 93
Twist rod control				
Complete (1.1 – 2.0 m)	4310 0774 91	4310 0774 91	4310 0774 91	4310 0774 91
Extension set (+1.1 – 1.9 m)	4310 0780 91	4310 0780 91	4310 0780 91	4310 0780 91
Articulating link	4310 0876 91	4310 0876 91	4310 0876 91	4310 0876 91
Chain collectors				
PVC for length of chain				
- 4 m	4310 0742 04		4310 0742 04	
- 7 m	4310 0742 07	4310 2291 07	4310 0742 07	4310 2291 07
- 12 m	4310 0742 12		4310 0742 12	
- 18 m	4310 0742 18		4310 0742 18	
- 25 m	4310 0742 25		4310 0742 25	
Chain collectors				
Steel for length of chain				
- 12 m		4310 2102 80		4310 2102 80
- 18 m		4310 2109 80		4310 2109 80
Overload protection device				
LLA 200 EX / 250 EX	4310 0812 83		4310 2233 90	
LLA 500 EX	4310 0812 84		4310 2233 91	
LLA 1000 U EX	4310 0812 85			
LLA 1000 / 1250 SR / 2500 EX / 5000 EX	Included as standard	Included as standard	Included as standard	
Safety hooks, zinc plated				
	4310 0739 01			
Chain stop, zinc plated				
	4310 0740 91	4310 2097 91		
Chain stop, stainless steel				
			4310 2231 90	4310 2231 90

Note: For items specified per metre, the required length should be indicated by multiplying the Ordering number by the required length i.e. to order 12 m of load chain for an LLA 250SR the order should be 12 x 4310 2211 00. When ordering load chain, follow the recommendations on chain length given in the Technical Data for LLA Hoists.

Air line accessories for hoists and trolleys

To ensure top performance and long service life from Atlas Copco air hoists and motor driven trolleys, the correct air line accessories should always be used in the installation. All hoists and motor driven trolleys have 1/2" BSP inlet connectors and a standard range of accessories is suitable for all installations.

Item	Description	Length (m)	Connection thread	Designation	Ordering No.
1.	Ball valve		1/2" BSP Female	BAL-1A 15	8202 0311 29
2.	Air filter		1/2" BSP Female	MIDI FIL 15C-BE	9093 0009 01
3.	Air pressure regulator		1/2" BSP Female	MIDI REG 15C-S	9093 0009 91
4.	Mounting kit			Mounting kit	9090 1654 00
5.	Oil fog lubricator		1/2" BSP Female	MIDI DIM 15C-E	9093 0011 11
6.	Metal bowl guard			Bowl guard	9090 1717 00
	Adaptor for lubricator (for use with hoist only)		1/2" BSP Male	Adaptor	4310 0786 00
	Adaptor for exhaust hose - LLA 200/250/500/1000		1/2" BSP Female	Adaptor	4310 0788 00
	- LLA 1250/2500/5000		(1" Hose nipple)	Adaptor	4310 2125 00
	1/2" Diameter hose	max 10		PVC 13	9093 0038 71*
	1/2" Hose nipple		1/2" BSP Male	Nipple	9000 0243 00
	1/2" Hose clamp			Hose clamp	0347 0122 12
	3/4" Diameter hose	max 40		PVC 20	9093 0039 31*
	3/4" Hose nipple		1/2" BSP Male	Nipple	4150 0429 00
	3/4" Hose clamp			Hose clamp	0347 0122 15
	1/2" Diameter spiral hose	0.5-7.5	1/2" BSP Male	SPI 15 S kit	4310 2276 90
					*30 m coil

Note: All motor driven trolleys are supplied with items to connect the hoist and trolley to a single air inlet.

